

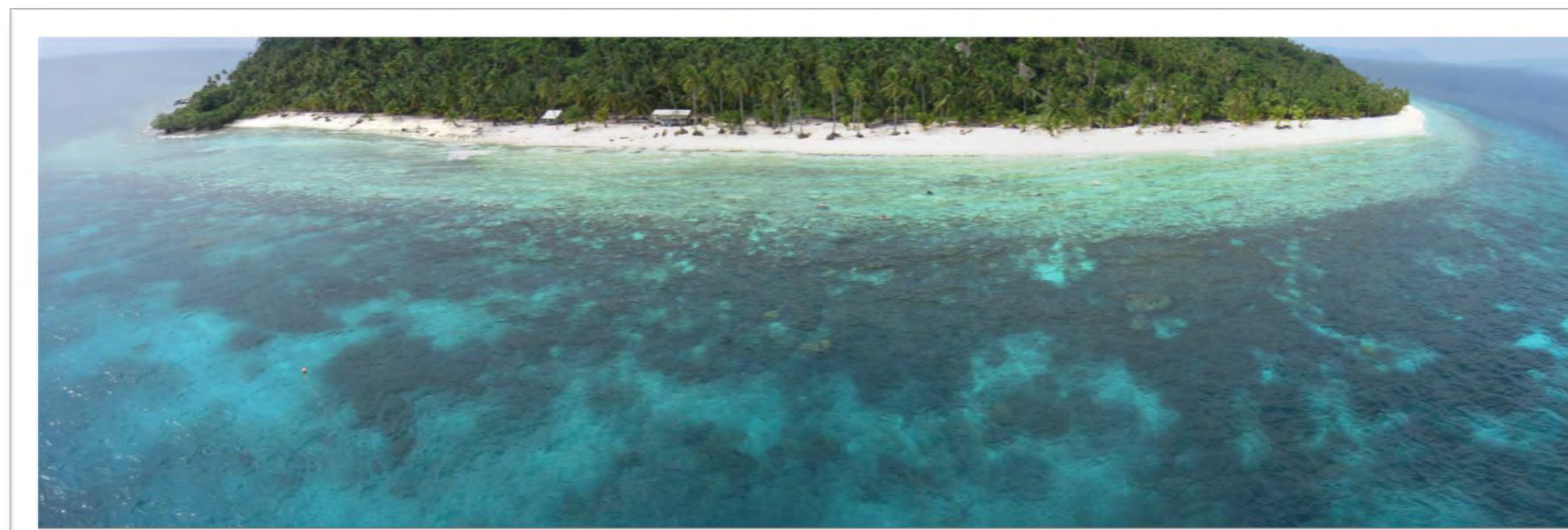
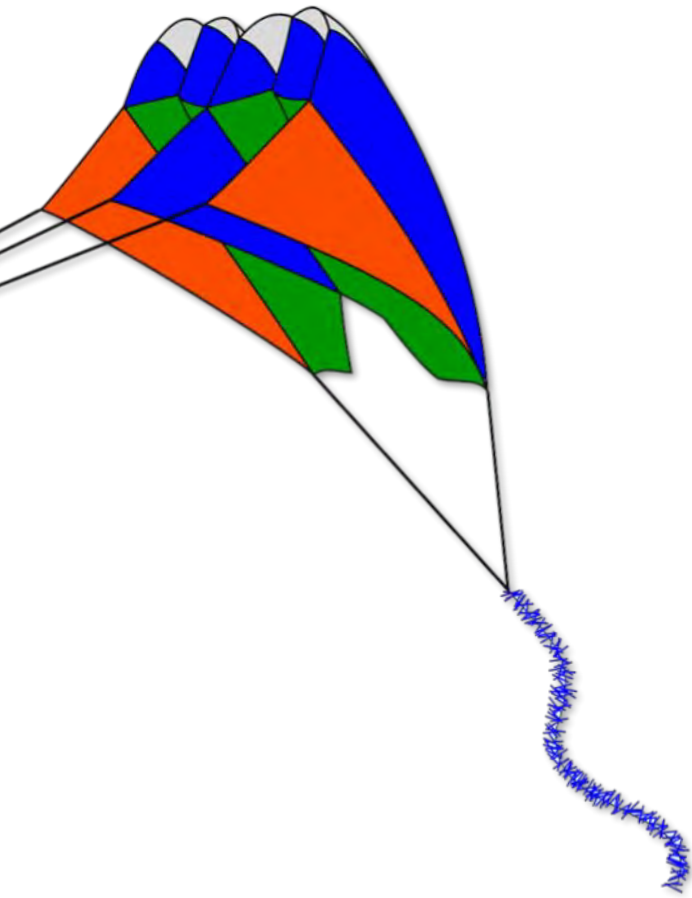
106°2.5'E

106°2.75'E

106°3'E

106°3.25'E

COASTAL IMAGING WITH KITE AERIAL PHOTOGRAPHY



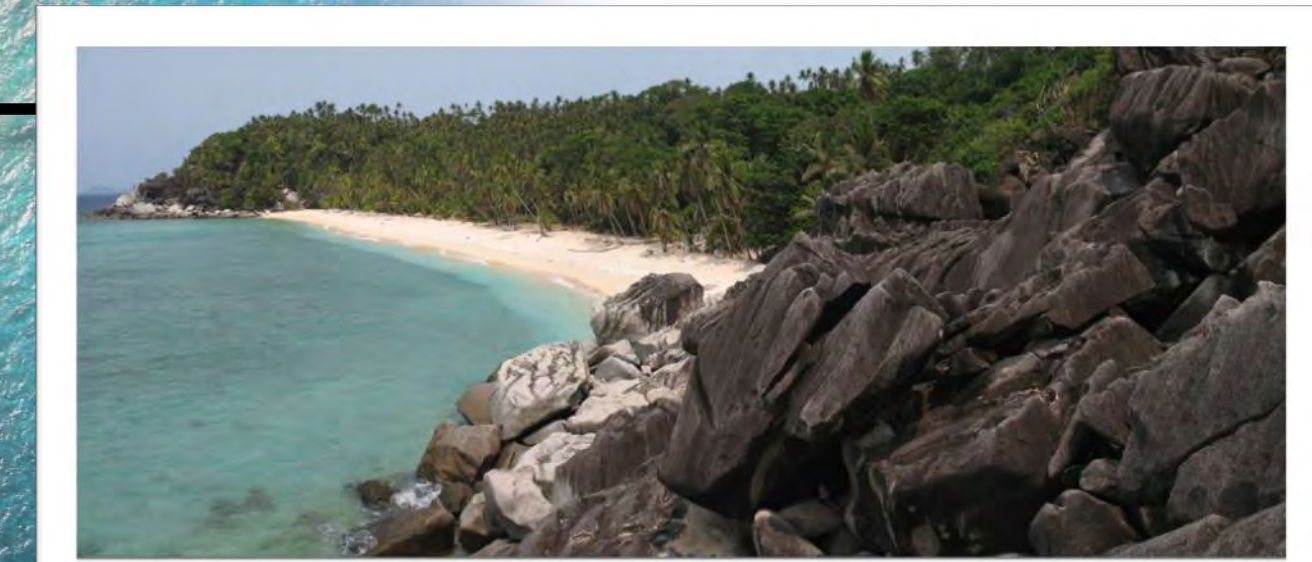
OBLIQUE PHOTOMOSAIC OF SOUTHWEST COASTLINE



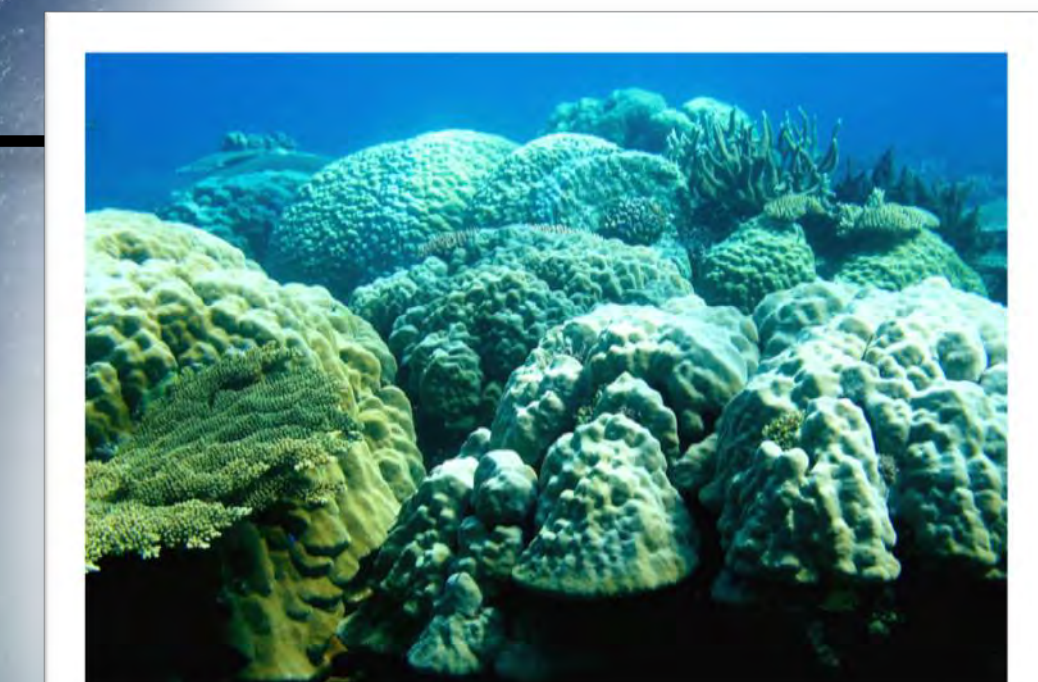
PAK'S PLACE



TURTLE TRACKS



VIEW TO THE SOUTHWEST



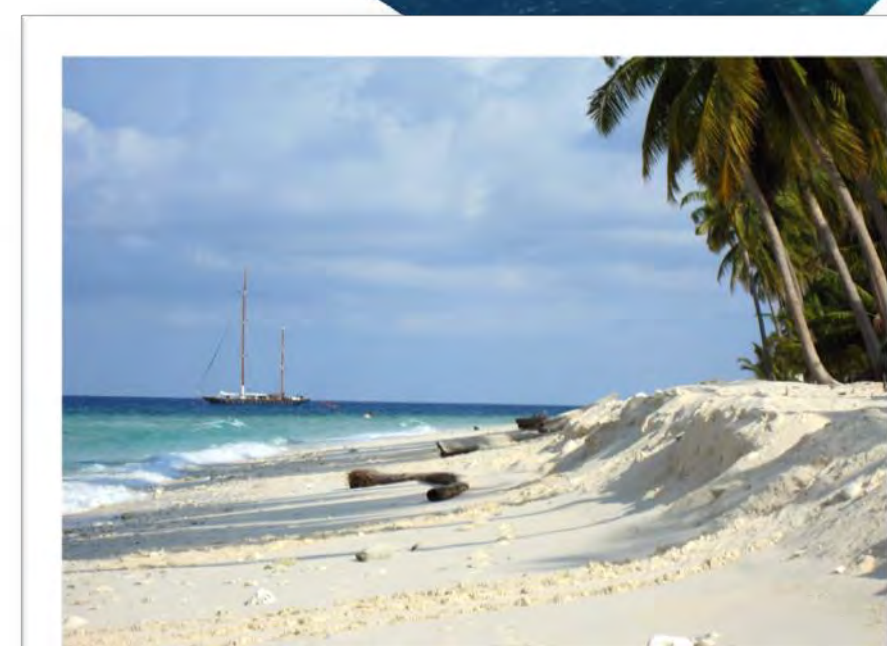
REEF DOMINATED BY *PORITES* CORAL



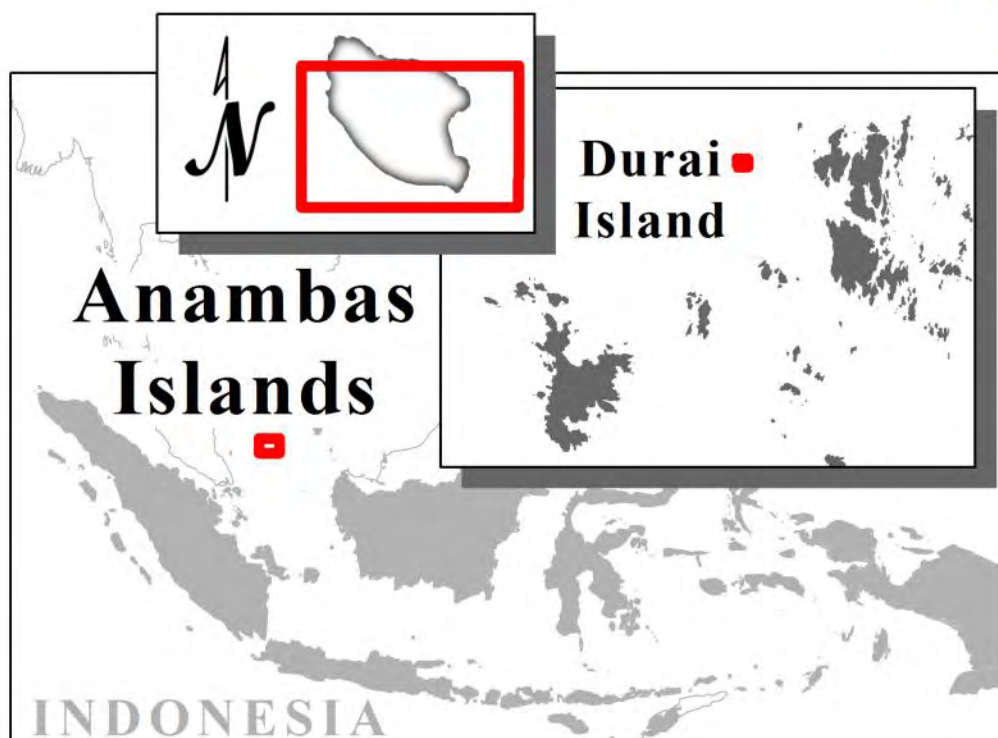
GREEN TURTLE



OVERLAND PATH



VIEW TO THE NORTHWEST



Anambas Islands

Durai Island

INDONESIA

DURAI ISLAND

UNIVERSAL TRANSVERSE MERCATOR ZONE 48N
WORLD GEODETIC SYSTEM 1984

IMAGERY DATE: 4 & 7 JULY 2011
MAP DATE: 17 OCTOBER 2013
MAP PREPARED BY KITTY CURRIER

1:2,000

0 40 80 160 240

METERS

AERIAL IMAGE MOSAIC STATISTICS

NUMBER OF INPUT PHOTOGRAPHS: 367
NUMBER OF GROUND CONTROL POINTS: 38
AVERAGE GROUND RESOLUTION: 3 CM/PIXEL
ROOT MEAN SQUARE ERROR: 1.41 M

KITTY CURRIER BIOSPHERE FOUNDATION & DEPARTMENT OF GEOGRAPHY, UNIVERSITY OF CALIFORNIA, SANTA BARBARA



3°20'N

3°20'N

3°19.75'N

3°19.75'N

106°2.5'E

106°2.75'E

106°3'E

106°3.25'E